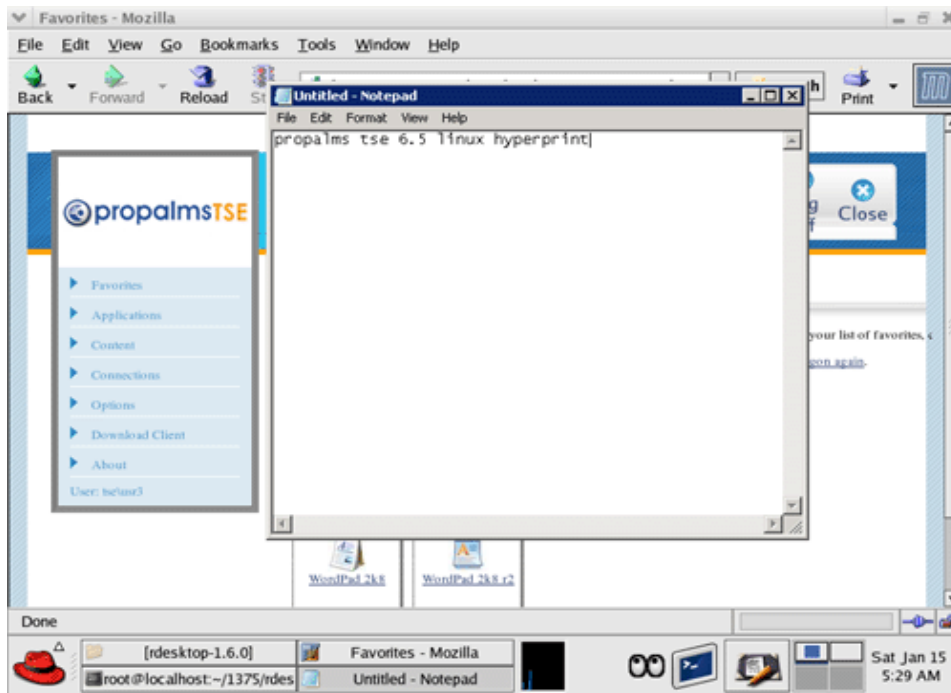


Linux Client Support

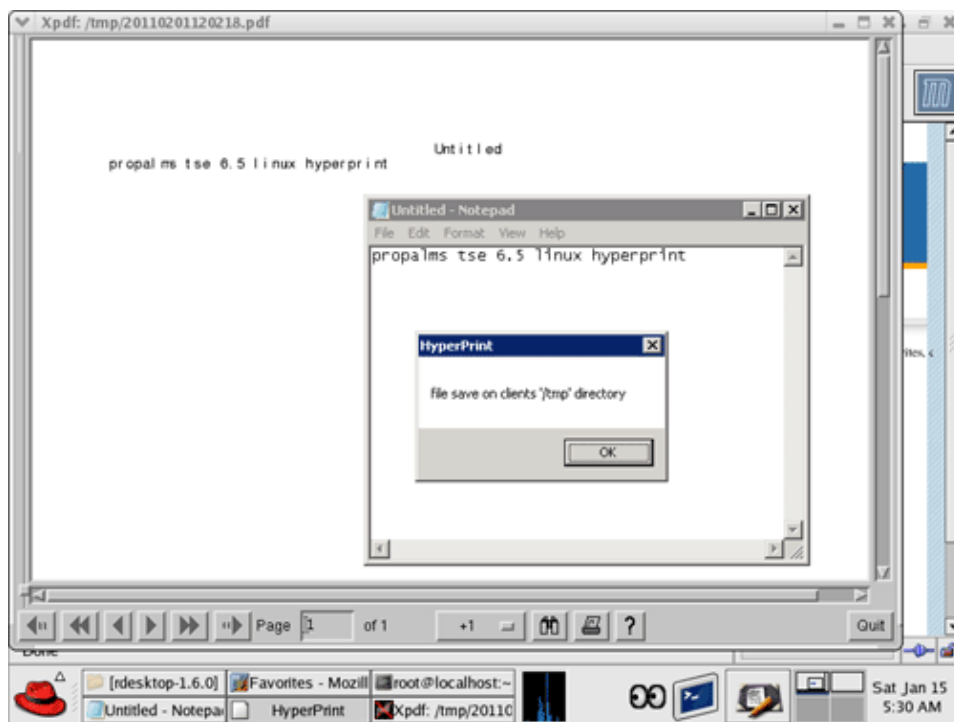
New Features In Propalms TSE 6.5

In TSE 6.5, Propalms TSE client for Linux support following features:

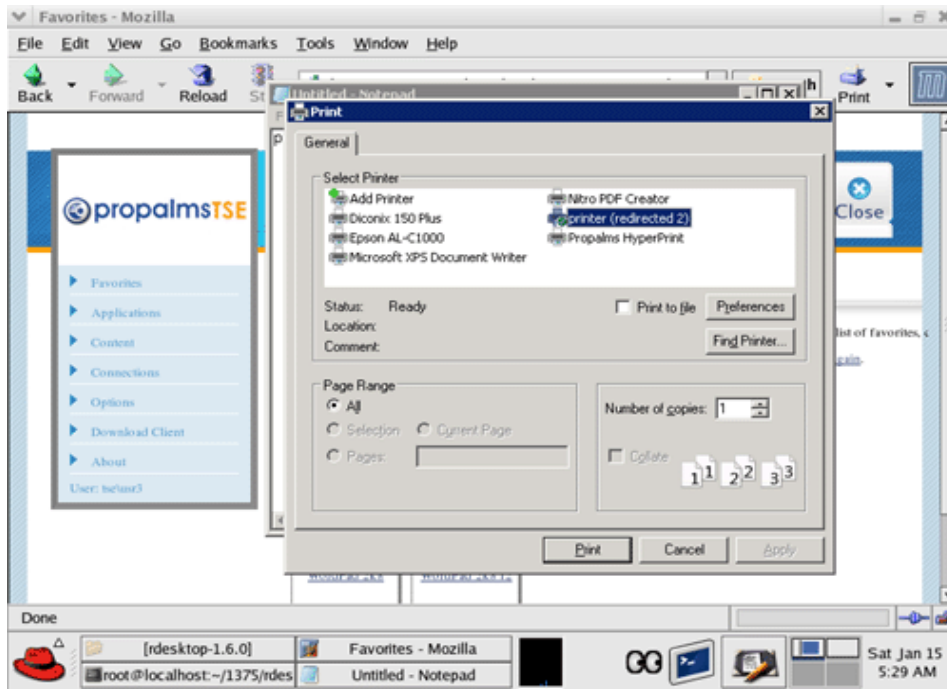
1. Seamless Application Launch.



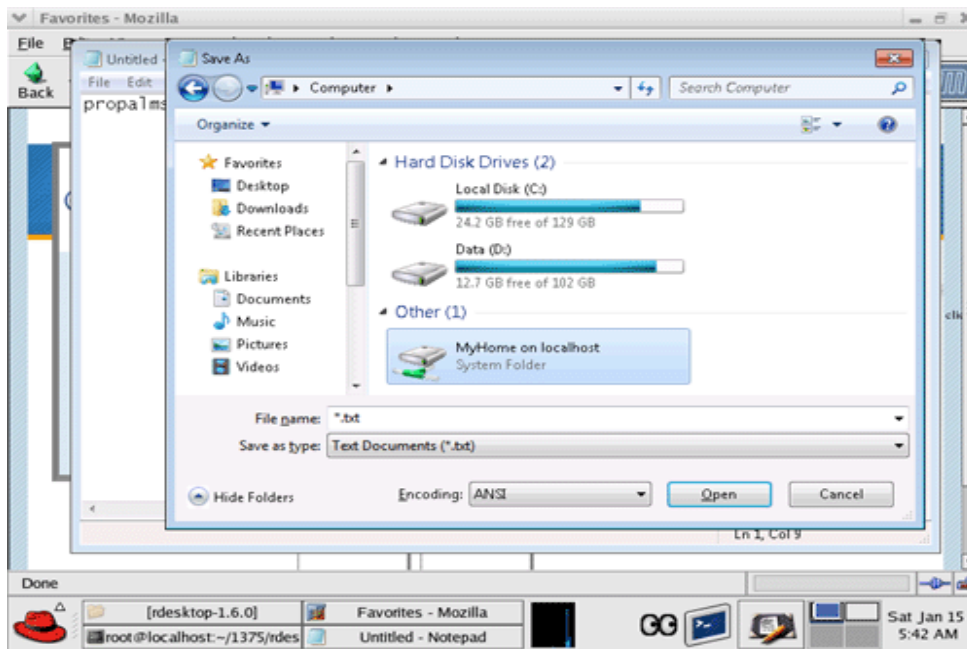
2. Propalms HyperPrint Support.



3. Client Printer Redirection.



4. Client Drive Sharing.



5. Enable Compression.

6. Bitmap Caching.

7. Enable Audio.

8. Color Depth.

Prerequisites

Rdesktop should be installed on your Linux Box. You can get the rdesktop from <http://www.rdesktop.org>.

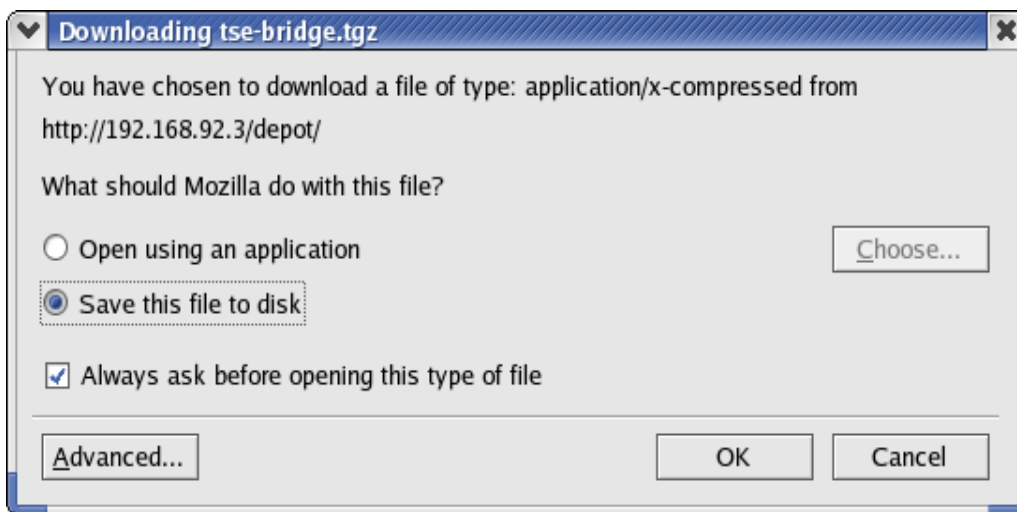
For Propalms HyperPrint support , use the custom Rdesktop included with the TSE Linux client module.

If Rdesktop already exists , you may rename and move it out to usr/bin directory. Copy the custom Rdesktop module to usr/bin directory.

In case, trouble getting the custom Rdesktop to work, build the Rdesktop on the linux box using the 'rdesktop-1.6.0' setup files included. For instructions on how to build rdesktop using the set up files, please refer instructions in the later part of this document.

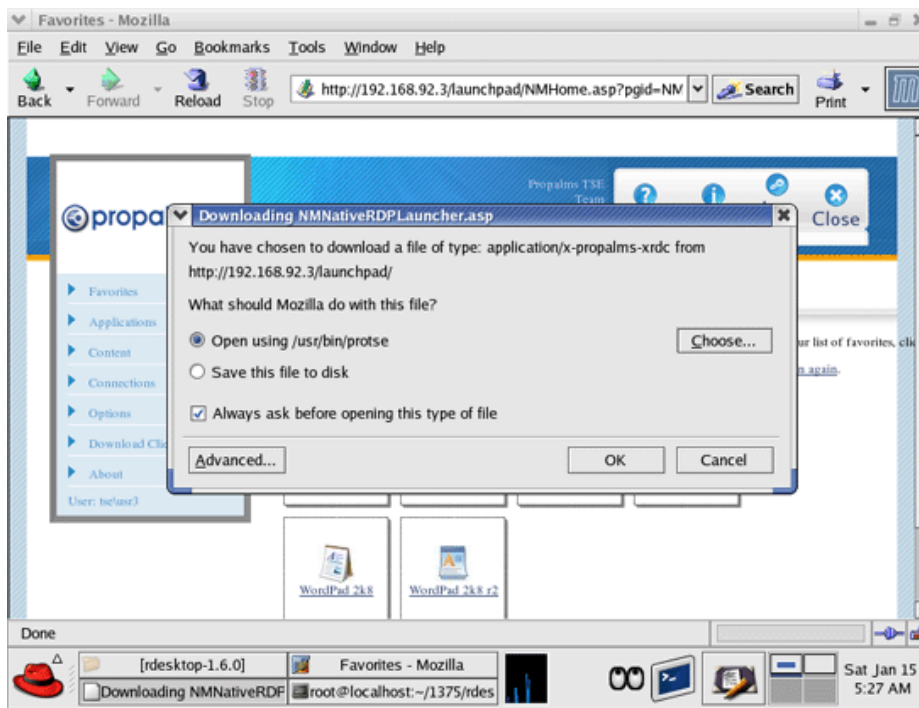
How To Use

1. Unzip **linux-tse-bridge.tgz** file. It contains files **protse**, **Rdesktop** and **rdesktop-1.6.0**. Protse is a bridge application for launching Propalms TSE sessions.

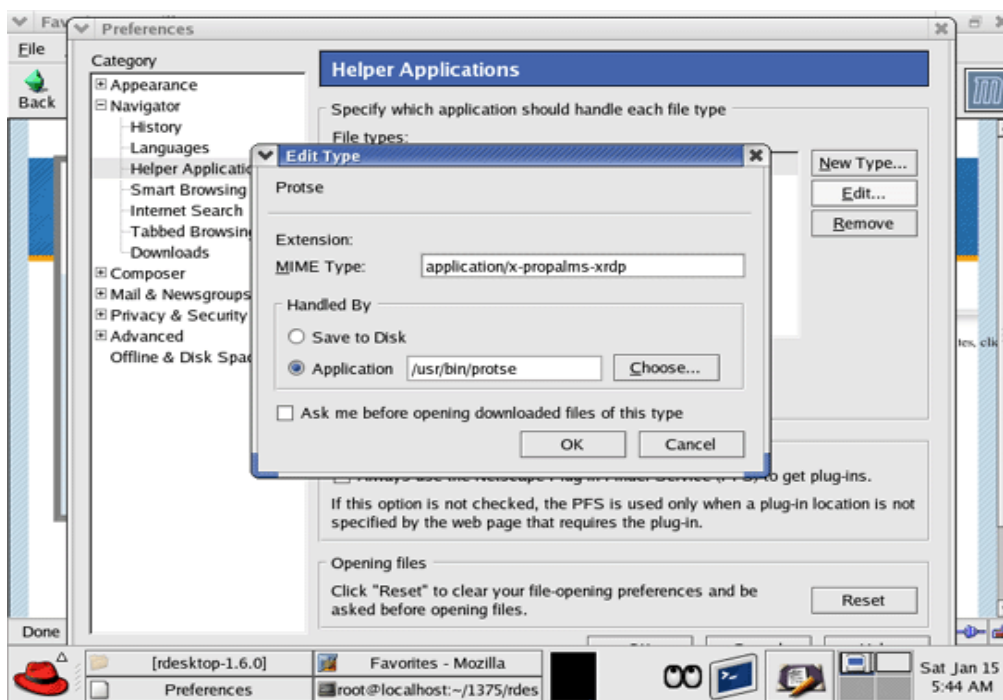


2. Copy **protse** and **Rdesktop** in user's '**/usr/bin**' directory, this is guaranteed to be in PATH always and Must have execute permission. To use **HyperPrint**, **protse** must placed in '**/usr/bin**' directory.
3. Use **Mozilla** or **Konqueror** (or any other browser that supports Helper Applications) to open the Propalms TSE Launchpad WebPage.

4. After you sign in you will get a list of Application that are assigned to you. When you click on any app to launch, your browser will prompt you that a file called **NMNativeRDPLauncher.ASP** is being downloaded and browser does not know how to open it. So it will give you two options either **"Save it to disk"** or **"Open it with:"**. Select open with option and specify the helper app as **"protse"**.



This will automatically configure **"protse"** as a helper Application for the **MIME Type application/x-propalms-xrdp**. You will have to give the complete path for example **"/usr/bin/protse"**. Alternatively you can manually configure the Helper Application as **protse** for the MIME Type, **"application/x-propalms-xrdc"**.



We have added support for HyperPrint in TSE 6.5 for TSE Linux client.

The default pdf reader to be used on Linux client machine for Propalms hyperprint can be set through an external config file. By default **xpdf** is used to open the **HyperPrint pdf** file.

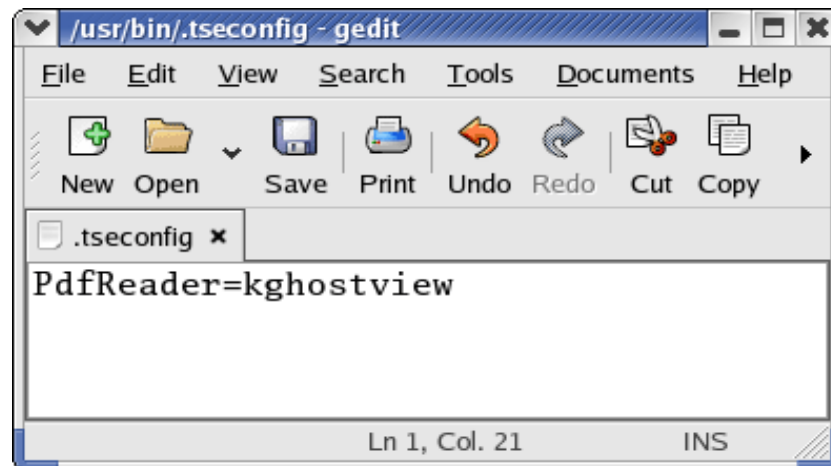
If xpdf is not available , user must specify a pdf reader app using the external **.tseconfig** file.

Write default PDF reader settings in this file with exact syntax given below.

for example;

`PdfReader=xpdf`

This line will make the =xpdf as a default PDF reader for hyperprint.



Note: If user does not define '**.tseconfig**' file, by default pdf file will be opened using '**xpdf**' if available.

Settings which can't be mentioned in ".tseconfig"

You can not specify the following parameters in ".tseconfig" file

- u: user name
- p: password (- to prompt)
- d: domain
- s: shell
- a: connection colour depth
- T: window title
- g: desktop geometry (WxH)
- r: <any client redirection device>

These Parameters are being governed by Propalms TSE connection settings.

Building Custom Rdesktop-1.6.0

1. Configuring rdesktop

```
root@localhost:~/1375/rdesktop-1.6.0
File Edit View Terminal Go Help
[root@localhost rdesktop-1.6.0]# chmod 777 configure
[root@localhost rdesktop-1.6.0]# ./configure
```

2. Make rdesktop

```
root@localhost:~/1375/rdesktop-1.6.0
File Edit View Terminal Go Help
checking host system type... i686-redhat-linux-gnu
configure: creating ./config.status
config.status: creating Makefile
[root@localhost rdesktop-1.6.0]# make
```

3. Make Install rdesktop

```
root@localhost:~/1375/rdesktop-1.6.0
File Edit View Terminal Go Help
op rdesktop.o xwin.o xkeymap.o ewmhints.o xclip.o
o rdpsnd_oss.o tcp.o iso.o mcs.o secure.o licence
e.o rdp5.o channels.o rdpdr.o serial.o printer.o
o mppc.o pstcache.o lspci.o seamless.o ssl.o -L/
6/lib -lX11
[root@localhost rdesktop-1.6.0]# make install
```

4. Verify Installed rdesktop

```
root@localhost:~/1375/rdesktop-1.6.0
File Edit View Terminal Go Help
'-r clipboard:[off|PRIMARYCLIPBOARD|CLIPBOARD]': enable clipboard
redirection.
'PRIMARYCLIPBOARD' looks at both PRIMARY and CLIPBOARD
when sending data to server.
'CLIPBOARD' looks at only CLIPBOARD.
'-r addin:<channelname>:</path/to/executable>[:arg1[:arg2:]...]' : enable
third
party virtual channel add-in.
-0: attach to console
-4: use RDP version 4
-5: use RDP version 5 (default)
[root@localhost rdesktop-1.6.0]#
```

NOTE: TSE Features like SPR,DMZ_SPR, Session Recording are not available when connecting from a Linux client.