



# Propalms Universal Client for iPad

## VERSION

1.0

## OVERVIEW

Propalms Universal Client for iPad is client software for the iPad tablet device that can be used to connect to the virtual application and desktop delivery infrastructure solutions provided by Propalms. Propalms has three different server products which can work together or independently to deliver applications, desktop and network services to mobile devices.

The three Propalms products are:

**Propalms TSE:** Terminal Services Enhancement for Microsoft Terminal Services for delivering applications.

**Propalms VDI:** Virtual Desktop Infrastructure solution for delivering Virtual desktops using VMware, Red Hat and Parallels.

**Propalms VPN:** An enterprise class SSL VPN solution to deliver network services, applications and desktop access to roaming users.

## FEATURES

Propalms Universal Client is available for **iOS 4.0** onwards with following unique features:

1. Supports iOS 4.0 and higher version.
2. Connections supported to
  - a. Propalms TSE 6.0, 6.5 and 6.5 SP1 (no support for DMZSPR/SPR)
    - i. Access published applications
  - b. Propalms VDI 2.0 and higher
    - i. Access your virtual desktop
  - c. Propalms VPN 3.6 and higher (TSE and RDP applications)
    - i. Access remote desktop based application through VPN
3. Full Profile management
  - a. Save profile
  - b. Set profile as default profile to auto-launch
  - c. Set TSE application to auto-launch upon login
  - d. Save password (optional)
4. Seamless application supported for TSE
5. Maximum gestures possible for RDP session
6. RDP User experience features
  - a. Full keyboard for RDP session
  - b. Virtual Mouse for RDP session
  - c. Screen zoom for RDP session
  - d. Drag and drop
7. User interface is supported in English and Japanese languages

## ROADMAP

1. Single Sign-on API for third party software
2. Access virtual desktop on VDI through Propalms secure access gateway (VPN)
3. Access web based applications through Propalms secure access gateway (VPN)
4. RDP user experience enhancement
  - a. Local echo of text
  - b. Enhanced keyboard support
5. Internationalized keyboard support
6. Support for more languages like Chinese, French, Hindi, etc
7. Publish individual applications directly on home screen so that user can tap individual icon to get the app launched
8. Support for launching TSE published app based on file extension. If user has access to MS Word via TSE and user clicks on a word document in email, then TSE published work would open with the document.
9. Layer 3 VPN

## GETTING STARTED

1. Download the Propalms Universal Client application from iTunes at the following location or search for Propalms on the App Store.  
<http://itunes.apple.com/us/app/propalms-universal-client/id467347561?mt=8>
2. Once the application is installed, some devices need to be rebooted for the application icon to be shown on the springboard.
3. Click on the icon named **Propalms** in applications, to launch Propalms Universal client.
4. Initially a profile needs to be created to connect to desired services.
5. A Profile can be created by selecting the desired server option and entering the required details.
6. Once a profile is created your authorized applications can be accessed seamlessly.

## INSTALLATION AND CONFIGURATION

1. Navigate to iTunes application on your iPad  
<http://itunes.apple.com/us/app/propalms-universal-client/id467347561?mt=8>
2. Launch Application named “**Propalms**” from the springboard.



3. For the initial launch the universal client will contain no defined profiles. Click on **Add** button on top right hand corner to define your own profile, by choosing the appropriate server connection.

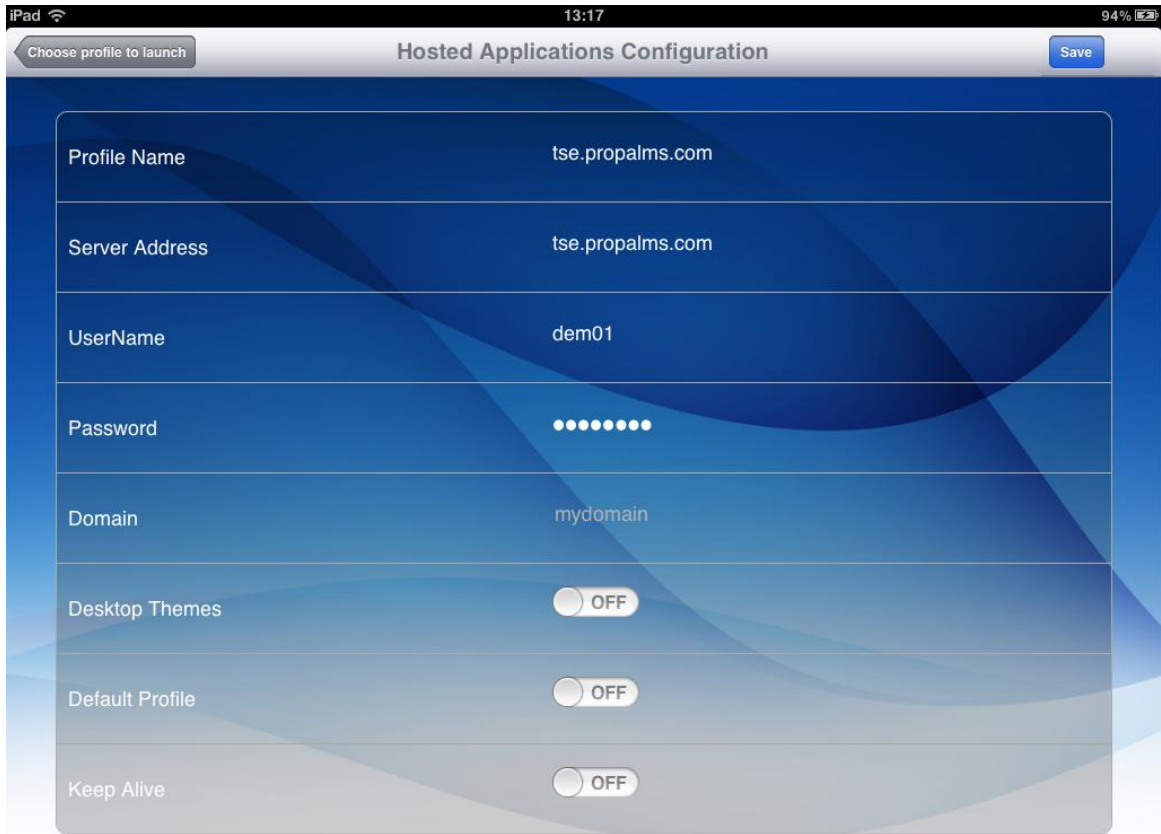
Propalms Universal Client can connect to:-

- **Propalms TSE** – published applications from remote desktop services
- **Propalms VDI** – virtual desktop connections from VMware, Parallels or KVM hypervisors.
- **Propalms VPN** – secure gateway for remote access to desktops and applications.
- **RDP** – native RDP connections to available servers and PCs.

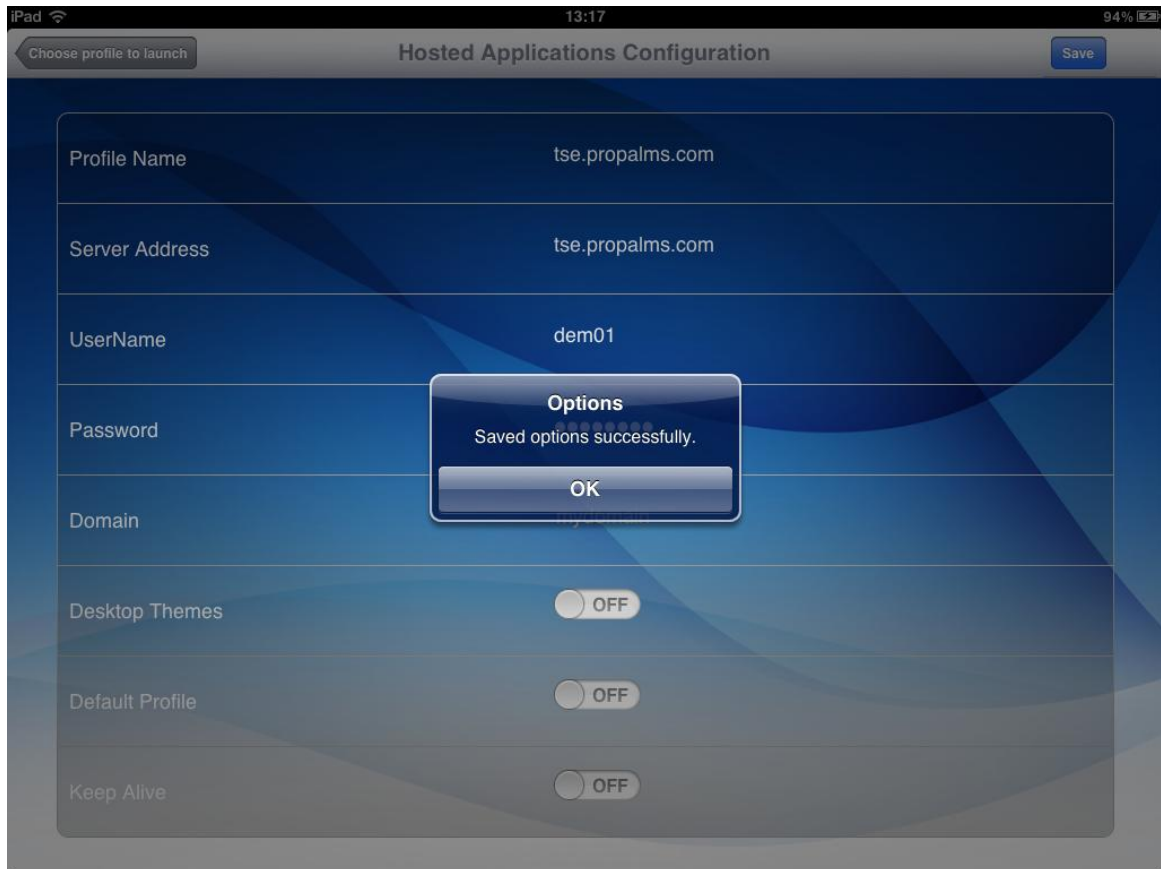


4. Enter all the information related to the server connection.

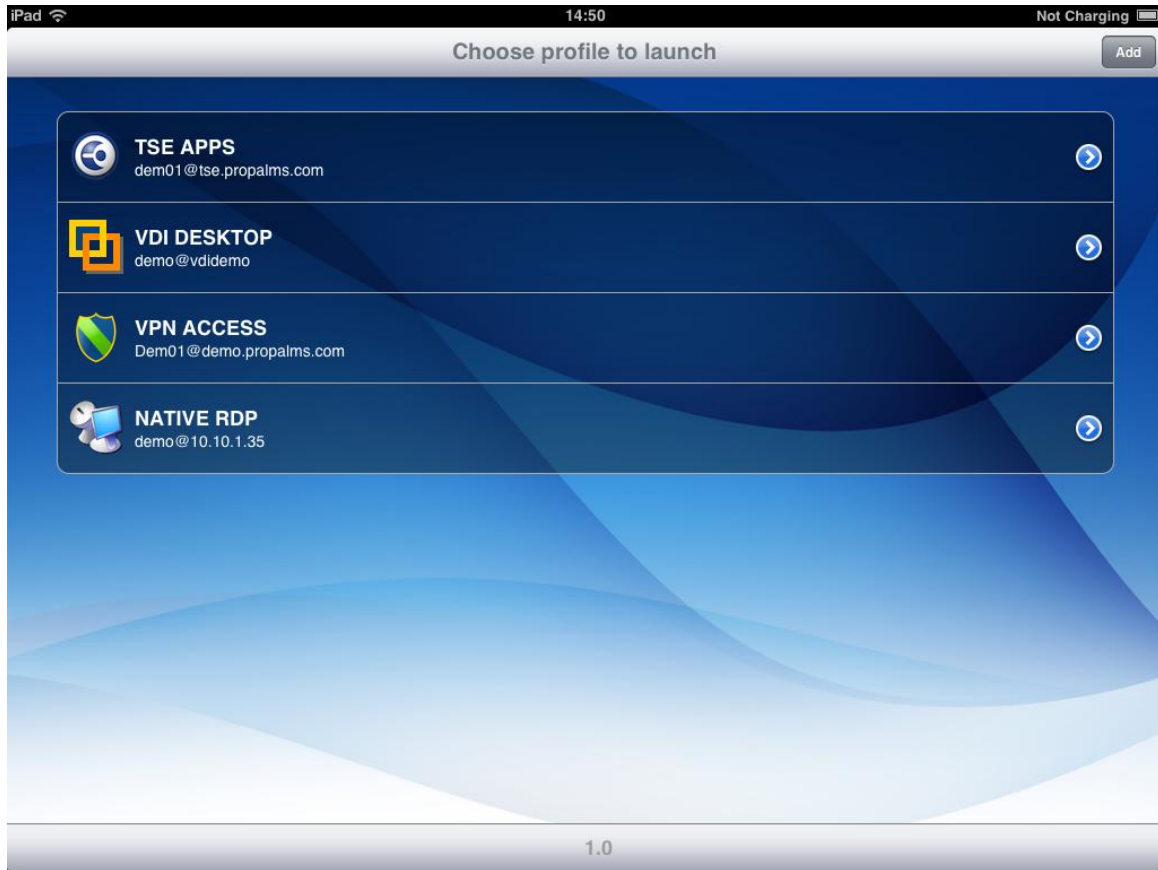
<b>Profile Name:</b>	Logical name for connection profile.
<b>Server Address:</b>	IP address or server name.
<b>User Name:</b>	User name for connection is required.
<b>Password:</b>	Optionally save the password in the connection or let it prompt on connection.
<b>Domain:</b>	Enter domain name if relevant.
<b>Desktop Themes:</b>	Enable enhanced UI over RDP.
<b>Default Profile:</b>	Default profile will launch automatically next time the universal client starts.
<b>Keep Alive:</b>	Applications launched via this profile will try to stay connected through available internet connection (This might take up the battery life). If turned off then the app will disconnect when Wi-Fi is dropped by the iOS.



5. After entering details, click on **Save** to save details.



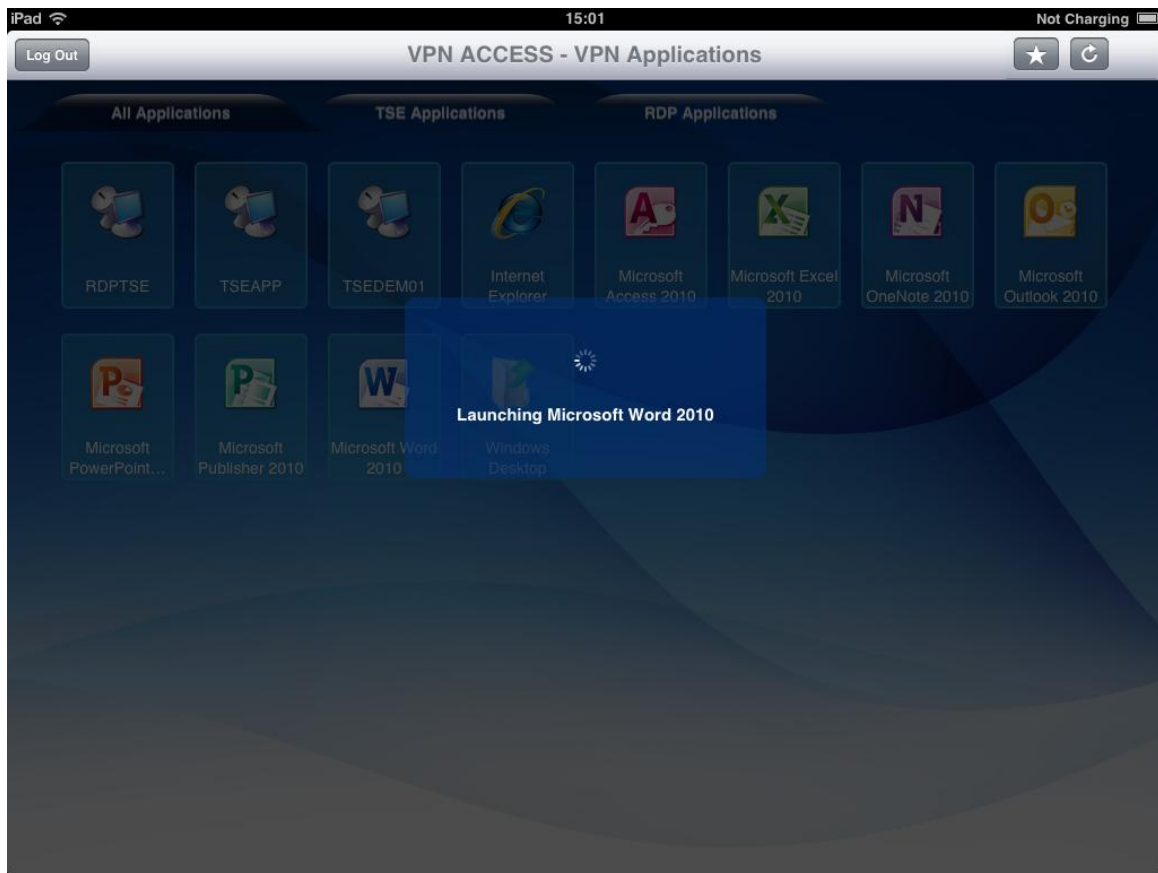
6. You can now launch the profile from the main screen of the application by tapping on it.



7. Applications related to the profile will be loaded into the application list screen when the profile is launched.



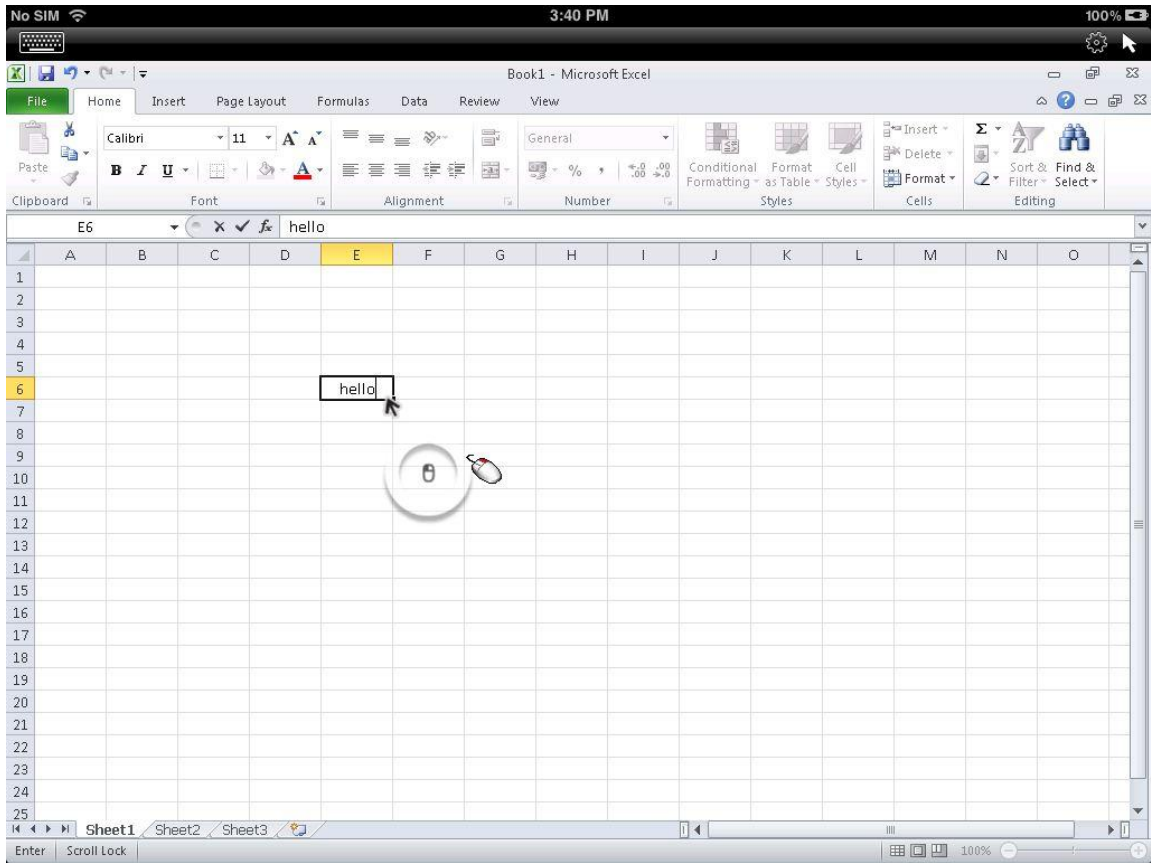
8. Simply tap an application to launch it.



9. Applications can also be made to auto start when the profile is launched by tapping the icon in the top right hand corner and selecting the application to auto launch (or a default application).



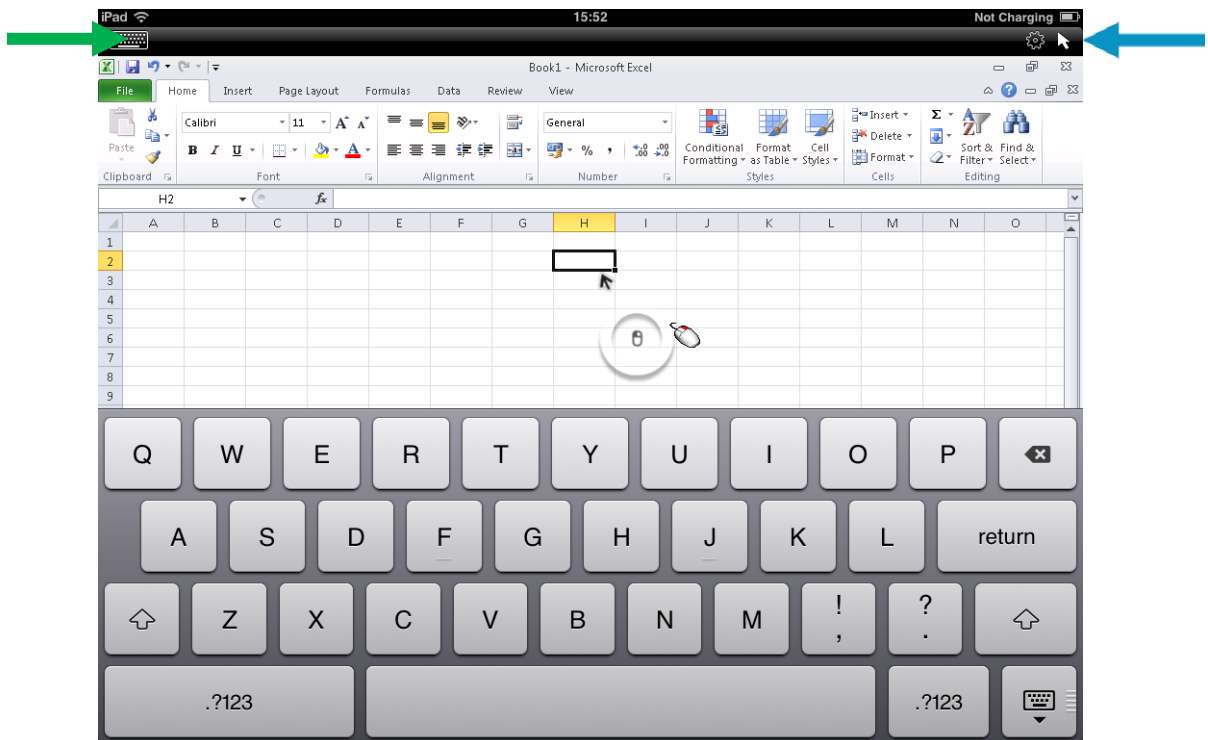
10. The application can then be used as you would from a PC.



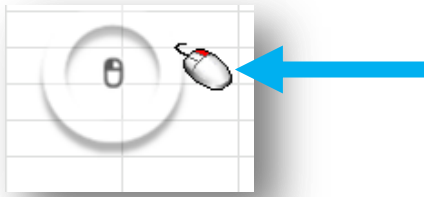
11. Functionalities like mouse, keyboard, zoom in and zoom out can be performed on this screen as desired.

The **mouse** can be turned on/off by clicking the arrow icon in the top right corner of the screen.

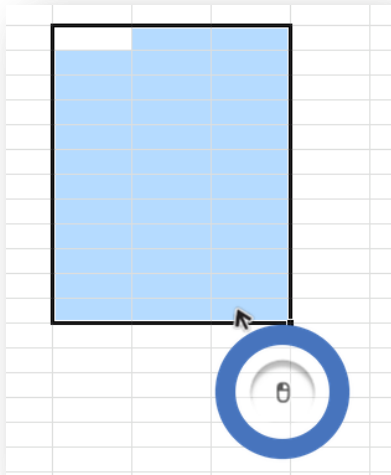
The **keyboard** can be turned on/off by clicking the keyboard icon in the top left corner of the screen.



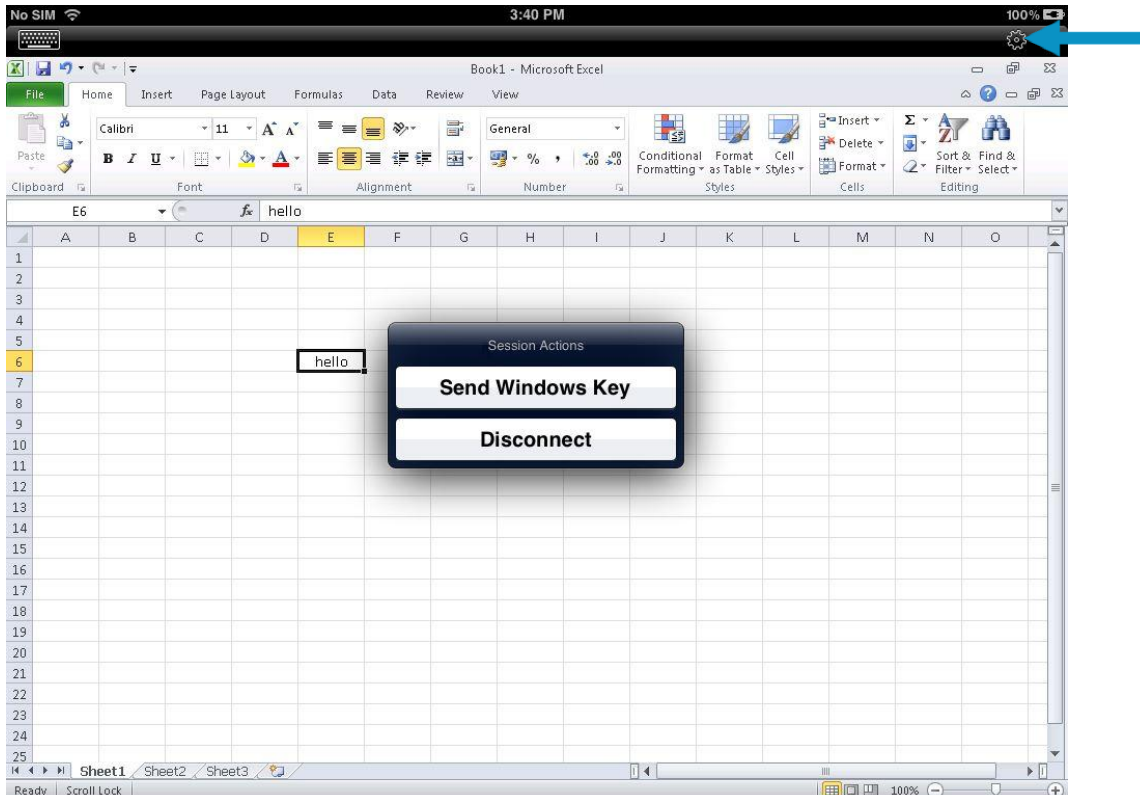
You can activate a right click menu using the mouse pointer by tapping the right mouse button shown.



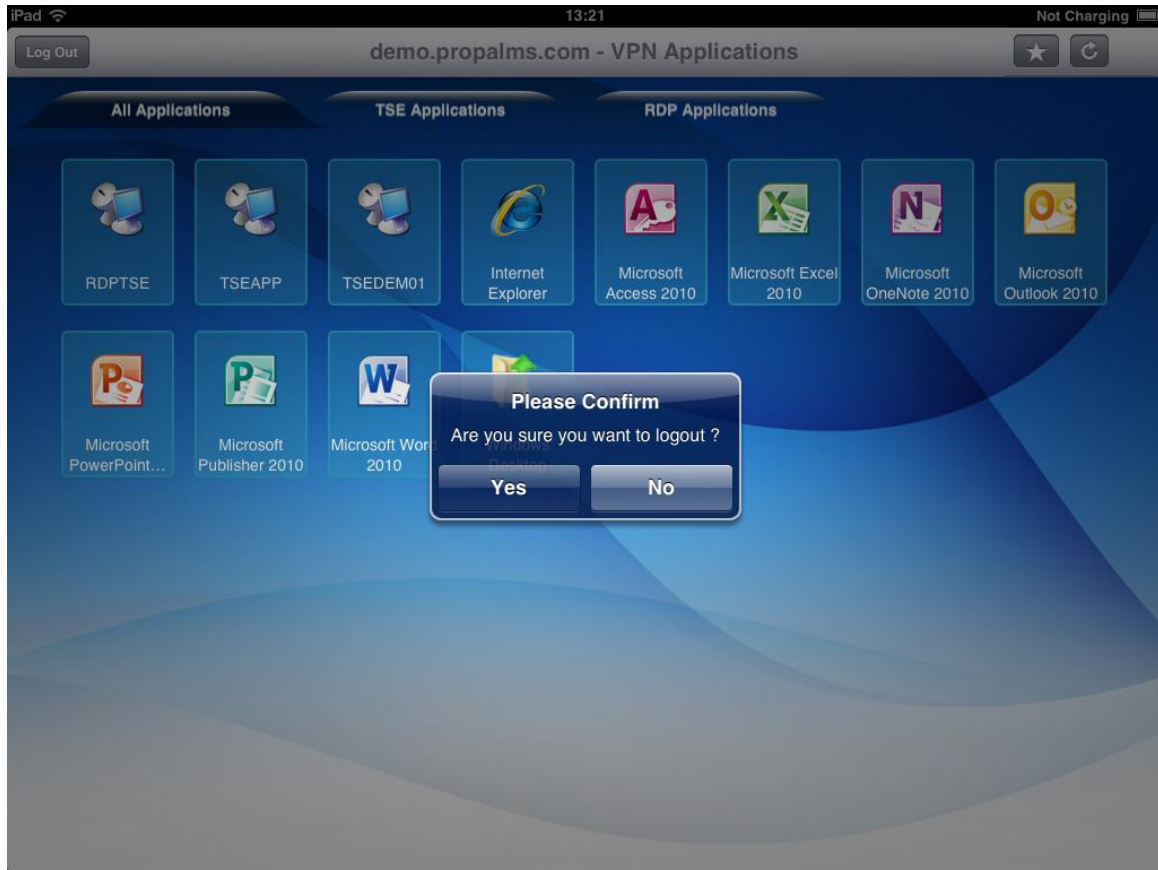
To drag using the mouse pointer tap and hold the icon until a blue circle appears then you can drag.



12. The application can be closed by disconnecting the session by selecting the top right hand icon similar to that of gears. Closing the application itself will log out as normal.



13. To log the Universal Client out from the current session, click on top left icon **Logout**.



Propalms Ltd is a global provider of application delivery and secure remote access solutions for Terminal Services and Virtual Desktop Infrastructures. Delivering to Enterprises of all sizes we offer reliable, scalable and affordable solutions that simply work. Our belief is that application delivery solutions should be flexible, dynamic and above all, simple to use.

© 2011 Propalms Ltd. All Rights Reserved. Microsoft®, Windows® are registered trademarks of Microsoft Corporation in the United States and other countries. All other trademarks and registered trademarks are the property of their respective owners.