



QuickStartGuide for installing

Propalms TSE 6.0

on Windows Server 2003

This guide walks you through installing the first server in a Propalms TSE Team. Once complete you will have a Windows 2003 Server running Terminal services and the following Propalms TSE roles:-

- TSE WEB Server
- TSE Load Balancer
- TSE Application Server
- TSE Database

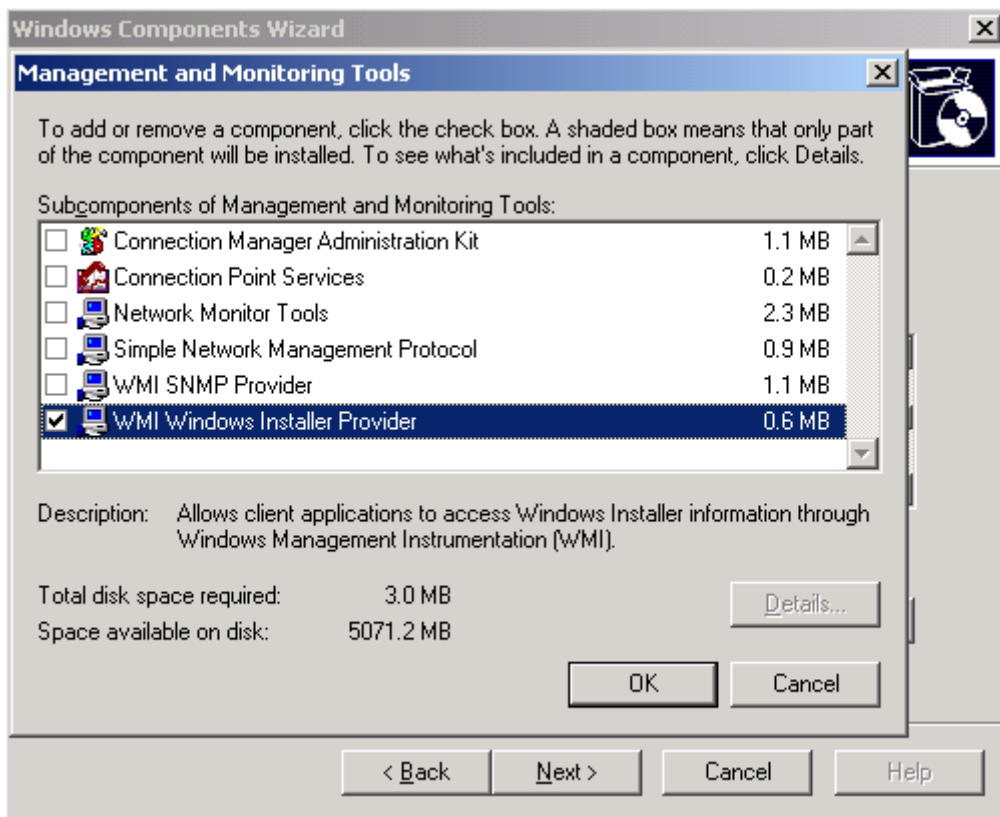
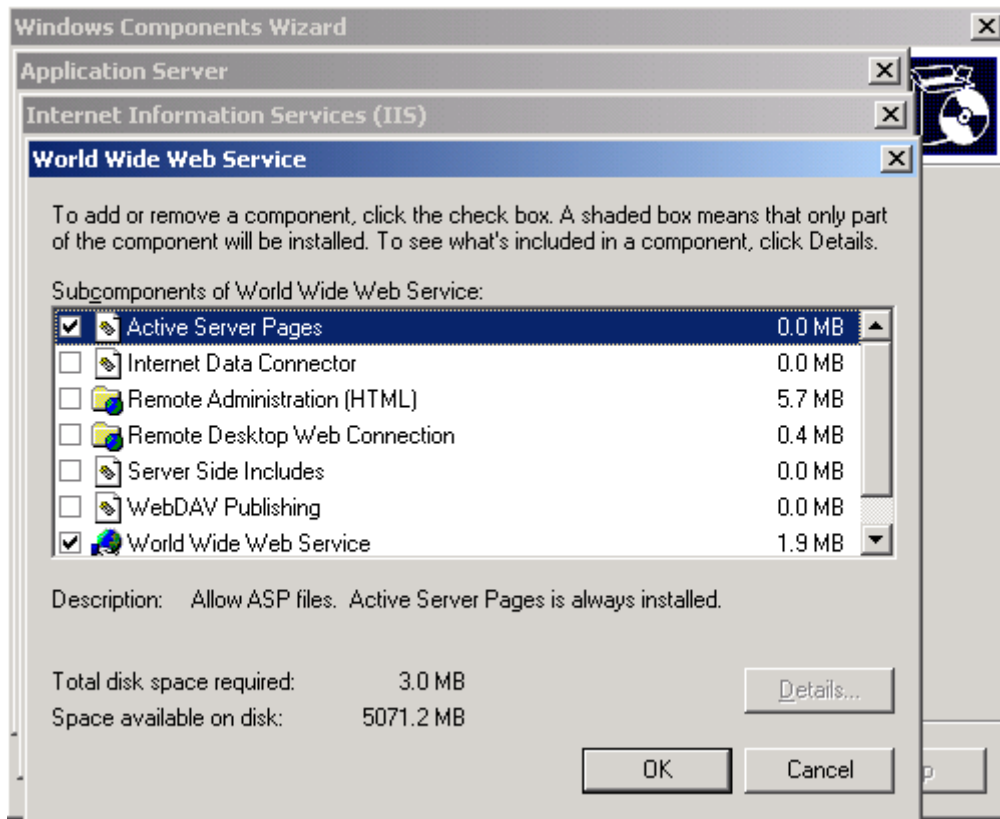
Software Requirements:

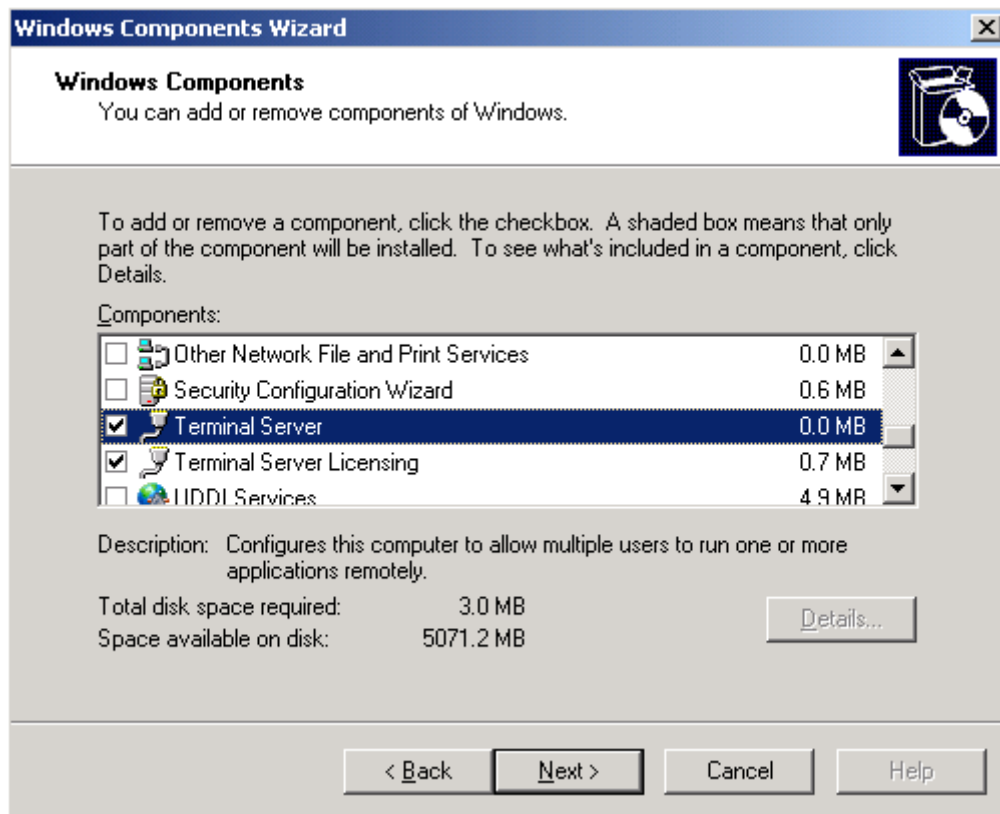
- Propalms TSE 6.0
- Windows Server 2003
- Microsoft .NET Framework 2.0 or above (included in Support folder on TSE 6 media)
- Microsoft SQL Server / SQL Express Edition (included in Support folder on TSE 6 media)

Install the required Windows components:

Go to Control Panel>Add/Remove Programs>Add/Remove Windows Components and install:

- Internet Information Server with support for Active Server Pages
- WMI Windows Installer Provider
- Terminal Server



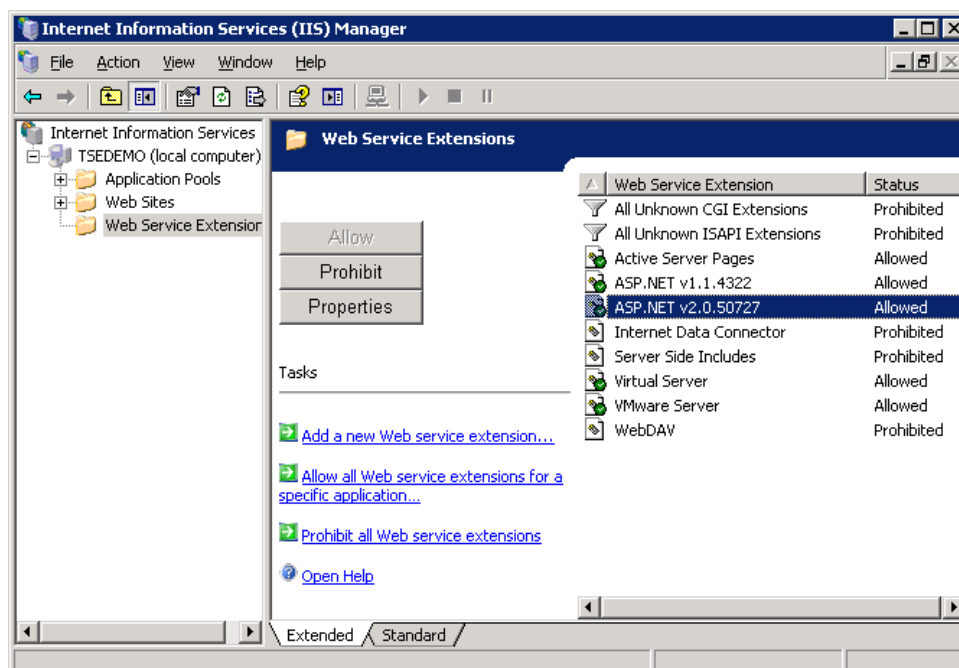


Install the following additional software:

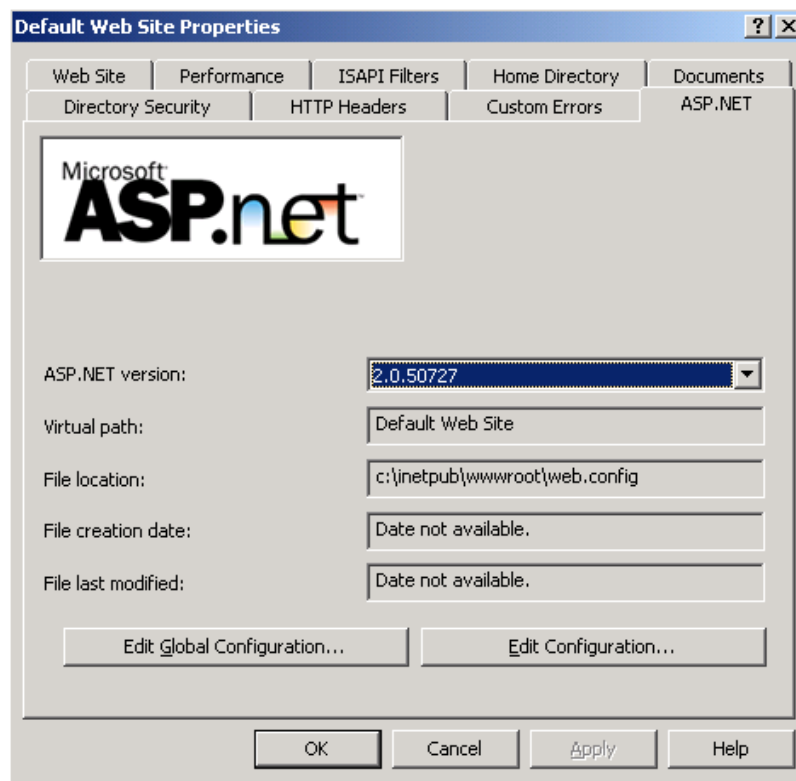
- Microsoft .NET Framework 2.0 or above (included in support folder on TSE 6.0 media)

IIS Configuration:

- In the IIS Manager window expand local computer > Web Service Extension in the left pane to display the configured web service extensions
- Configure ASP.NET v2.0 to be 'Allowed'



Ensure that the correct version of ASP.net is associated in the default website.



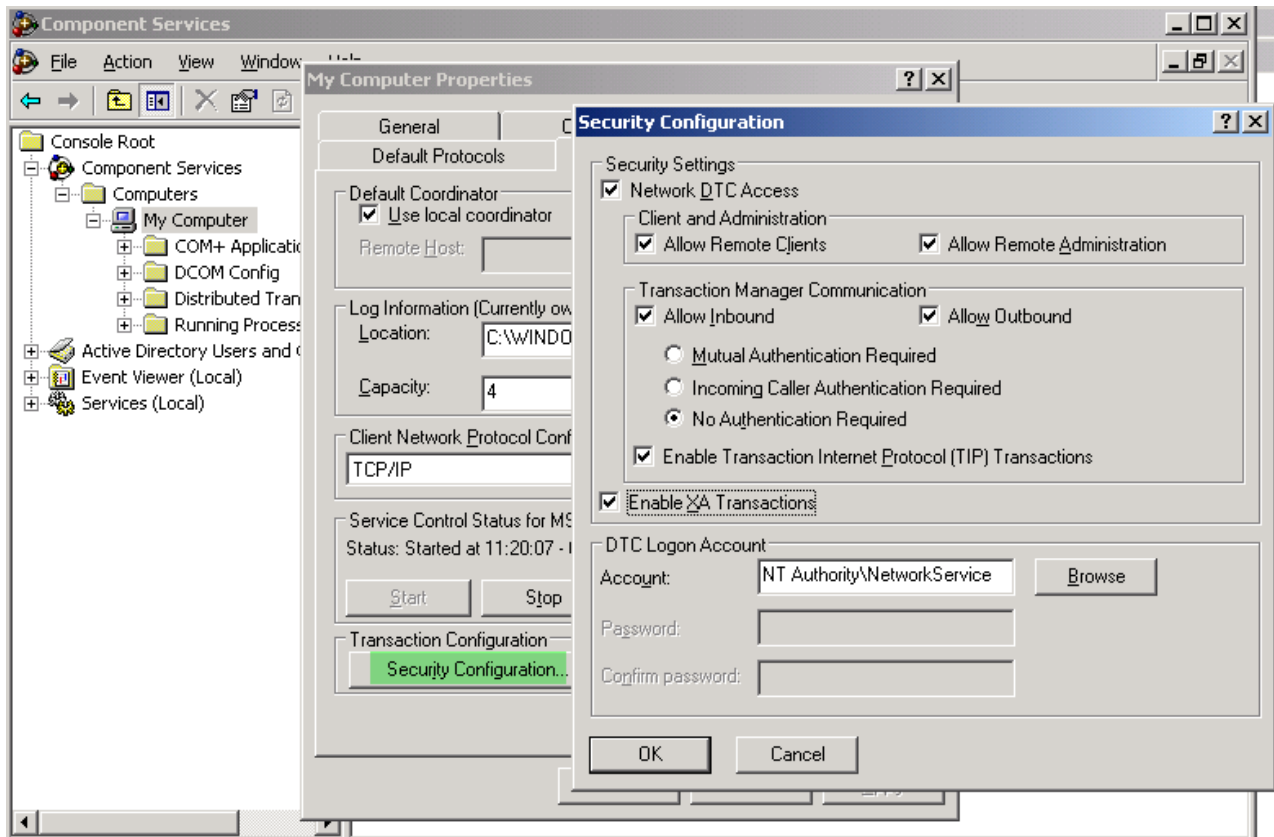
Propalms TSE Database

- Microsoft SQL Server
OR
- SQL Express Edition

SQL Express 2005 is included in the support directory on the TSE 6.0 media. An install script (InstallSQLEXPRESS.cmd) is included which when run on the server will install SQL Express with the required settings for use with Propalms TSE. The install script creates a SQL instance named 'Propalms'. When prompted for the database server name in the propalms installation use the format 'SERVERNAME\Propalms'

Network DTC Access

Enable the settings as shown below. This action should be performed on all Propalms TSE Servers including the database server if it resides on a separate server.

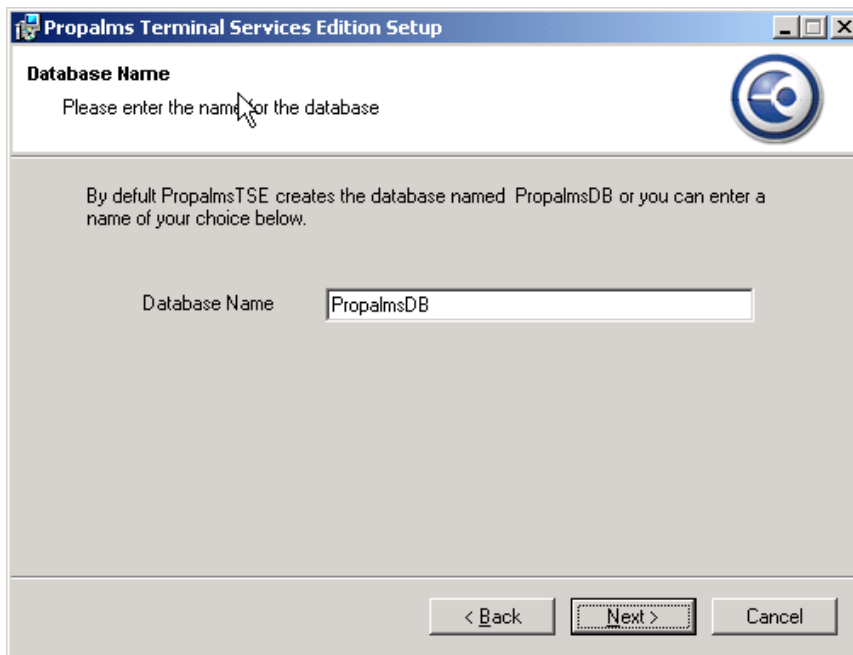


Firewall

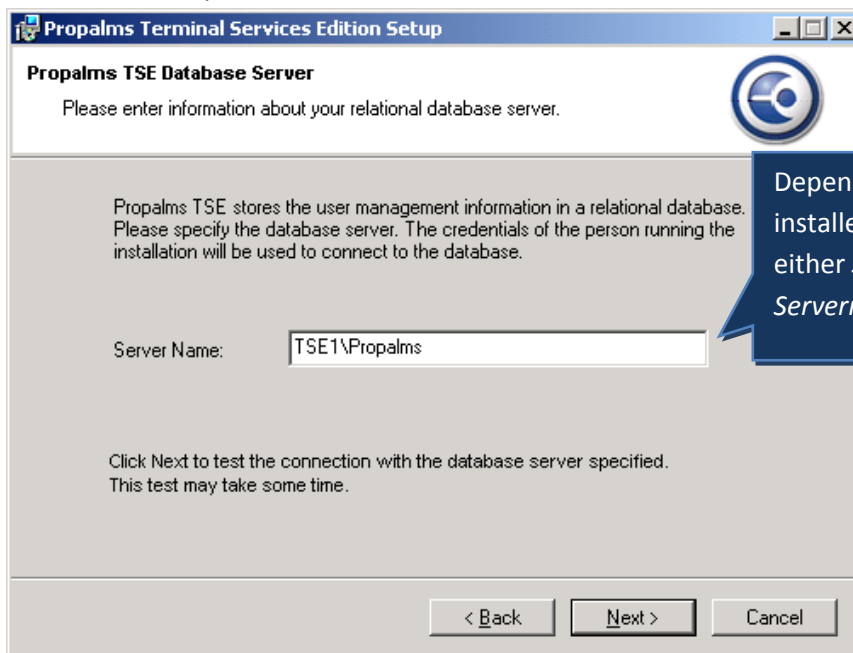
Go to Control-Panel and turn off Windows Firewall if it is currently on.

Install Propalms TSE 6.0:

- Run Propalms-TSE.exe from installation media
- Read and accept license agreement to continue
- Choose Domain or Local users for purpose of securing published application access
- Choose Create New Team
- Ensure all pre-requisite checks are met
- Enter Licensing information
- Type your chosen Database name



- Give a valid SQL instance in format of *Servername* or *Servername\instancename*
If the SQL Express was installed using the script provided with the TSE 6.0 media then use '*Servername\Propalms*' as the value.



Depending on how SQL was installed this value should be either *Servername* or *Servername\instance*

- Enter Team Name

- Enter Propalms TSE Identity Account (e.g. Administrator)

Propalms Terminal Services Edition Setup

Component Identity
Please specify an identity for the COM+ components.

COM+ components require an identity to initialize and run. Please enter the user name and password for use by these components.

User Name:

Password:

Domain:

Note: This user will be given Local Administrator Rights on all Propalms TSE servers.

< Back Next > Cancel

This account should already have been created in the Domain or local machine

- Enter Propalms Administrators Group

Propalms Terminal Services Edition Setup

Administrator Group
Please specify the administrator group for Propalms Terminal Services Edition.

Propalms TSE is managed by a group of administrators. Please specify the name and domain of the group that will administer Propalms TSE.

Group Name:

Domain:

< Back Next > Cancel

This group should already have been created in the Domain or local machine

- Choose Destination and Finish
- Restart

Your Propalms TSE server should now be fully installed. To administer the system go to the Propalms Management Console - <http://servername/console> and login using the Propalms Identity account specified above.

To login as a user go to <http://servername/launchpad> and login with a valid user account. In order for applications to appear for your users you have to publish them to groups/OUs/users within the Propalms Management Console. For more information refer to the Propalms TSE Administrators Guide.



Propalms, Inc. is a leading global provider of application delivery solutions for Terminal Services and Virtual Desktop Infrastructures. Delivering to Enterprises of all sizes we offer reliable, scalable and affordable solutions that simply work. Our belief is that application delivery solutions should be flexible, dynamic and above all, simple to use.