

Terminal  
Services  
Edition 6.0

# HOTFIX ROLLUP PACKAGE 1.0 for Propalms TSE 6.0



## **1. Introduction:**

This Hotfix Package installs all the previous and latest server-side hot fixes for TSE v6 (build 1252). At a later date, a new TSE v6 build will be released that would have the fixes in this package integrated. Please visit the Propalms Web site <http://www.propalms.com> for up to date information on the latest release build for v6.

## **2. Detail:**

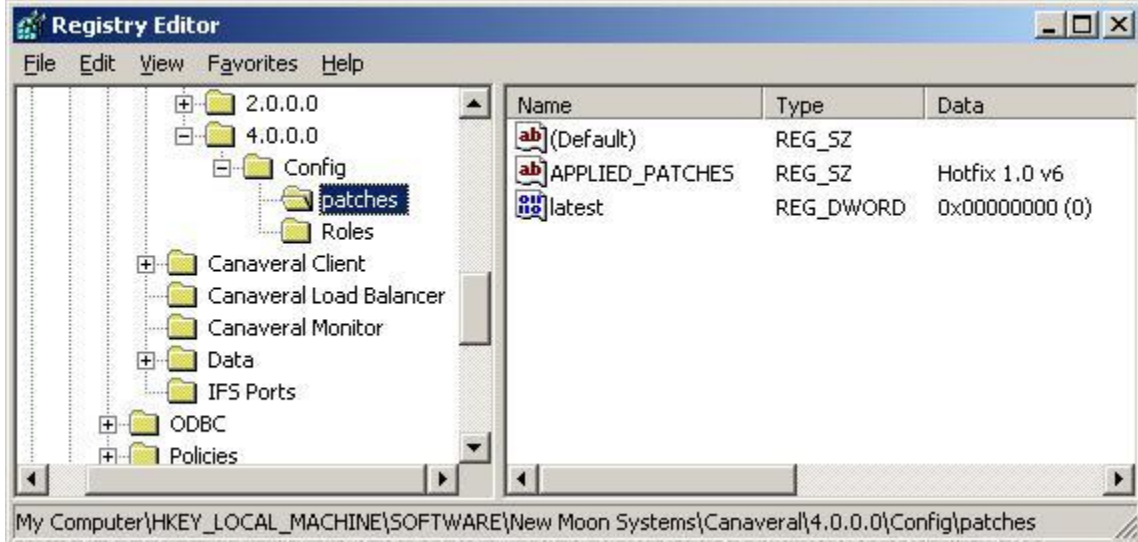
This Hot-fix installer should be run on every Propalms TSE Server running any of the below mentioned Propalms Roles:

- Web Role
- Load Balancer Role
- Application Role
- Virtual Desktop Role
- Single Port Relay (SPR)

The installer will detect the roles installed and apply the relevant hot fixes for the corresponding roles running on the Propalms TSE Server. The Hotfix installer can be run as many a times as needed, if the Propalms admin removes, adds or restores any of the aforementioned roles on the Propalms TSE server.

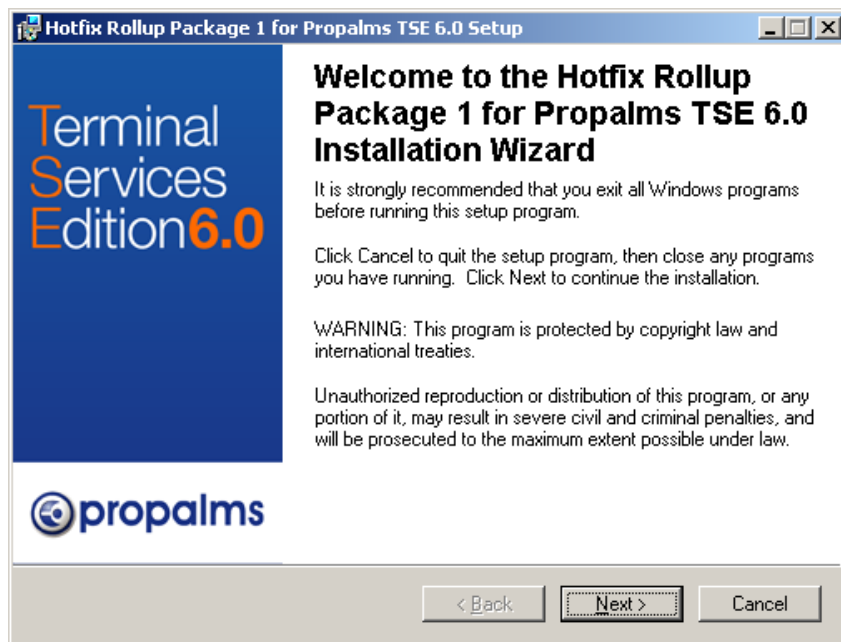
The admin can check the following Registry location on the Propalms TSE Server to find out if the Hotfix Rollup Package 1 has been implemented on the TSE server.

HKEY\_LOCAL\_MACHINE\SOFTWARE\New Moon Systems\Canaveral\4.0.0.0\Config\patches

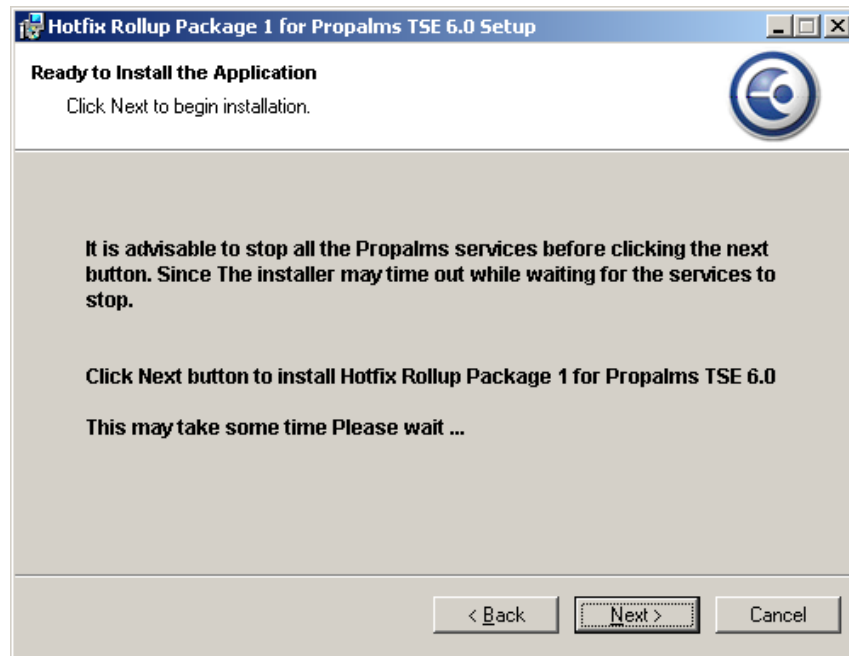


### 3. Installation:

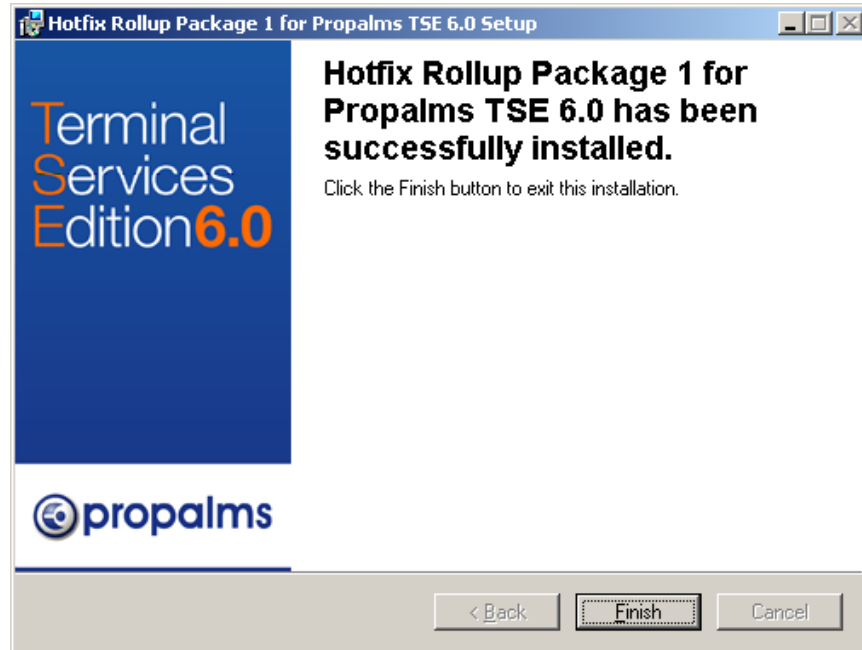
- 1) Copy and extract the PROPALMSTSE6-HRP1.zip file at a suitable location on the TSE box.
- 2) Run either the Propalms-TSE-6\_0-HRP1.msi or .exe to start the installer.  
Note: The PropalmsHyperPrint.msi and the PROPALMS-TSE-6\_0-HRP1.ini should be in the same folder as the .msi and .exe. So if copying the install files to other TSE server, make sure to copy the entire folder.
- 3) The following screen should be displayed:



- 4) Click on Next and read the recommendation. It is a good practise to manually close down Propalms Services. At times the installer may time out if the services take a long time to close.



- 5) On successful installation the following screen should be displayed:



**Run the Hot Fix installer on all Propalms servers running WEB, LB, APP, SPR or VDI roles. The Hot Fix installer should NOT be run on DMZ-SPR.**

#### **4. Bugs fixed in HRP1:**

- 1) Incorrect value shown by the Active/Disconnected sessions gauge on Propalms TSE Console - Dashboard page, when launching apps with different Connection settings.
- 2) Propalms HyperPrint printer would not print jobs sent in batches. Would only print the last spooled job in the batch set.
- 3) Propalms Console- Home –Summary – Concurrent User License page would not show navigation link to go to the next page, if concurrent users logged-in was more than 20.
- 4) Propalms Console- Reports- Audit Log would show invalid object type for Tasks related Logs.
- 5) Removing multiple TSE servers on Manage-Tasks page, for a defined Task would fail with an error.
- 6) Adding new TSE servers to an existing Task would remove the existing TSE servers from the Task list.
- 7) Continuous refresh of Propalms TSE Console Dashboard page would cause Memory leak on the Propalms Web server.
- 8) Propalms session reporting and Seamless windows feature would break if the application launched through Propalms was a DCOM app or an application that opened child processes and terminating the parent process that started them.
- 9) On a new TSE v6 team install, Synchronise Backup DB task would be enabled by default even if Backup DB was not configured in TSE. This would cause the scheduled task to fail.
- 10) Sorting Console-Reports-Session page on 'Still Active' would also list disconnected sessions.
- 11) Propalms License would not release in the event of a Virtual Machine (VD) launch failing.
- 12) On downloading reports for sessions in Console, the headings for the reports were mis-aligned in context to the information represented in the corresponding column.
- 13) In Propalms Console-Dash Board – Server Metrics gauge, server names would overlap each other if the server names were too long.
- 14) Monitor-Load Balancer page in Propalms console would report incorrect values for CPU cycles if the server was running Two Dual Core processors.
- 15) A TSE Server Diagnose test on a newly installed TSE 6 web server would always show the settings test fail with error "Default Document not properly set in Console Virtual Directory"
- 16) HyperPrint Printer would stop printing with the message "Document is printing, please wait"
- 17) In TSE v6 release HyperPrint was not supported on Win 2008. Running the Hotfix installer will install HyperPrint Printer on 2008 APP servers.

## **5. FAQ:**

- Q) Can one install v6 Hotfix Roll-up Package 1.0 multiple times ?
- A) Yes, if a TSE admin removes, adds or Restores Propalms roles on a TSE Server, the Hotfix installer should be re-run for installing the relevant role fixes. Also run the Hotfix installer on any newly added TSE server to the team.

- Q) What files are replaced as part of the Hotfix Rollup Package 1?

- A) **Web Server:** (File version for all replaced files is 1258, original version is 1252)

..\Inetpub\wwwroot\Console\NMSiteStyle.xsl  
..\Inetpub\wwwroot\Console\NMPagedQuery.asp  
..\Inetpub\wwwroot\Console\NMSiteMapExtras.en-us.xml  
..\Inetpub\wwwroot\Console\Sitemap.en-us.xml  
..\Inetpub\wwwroot\Console\NMCommon.asp  
..\Inetpub\wwwroot\Console\NMAction.asp  
..\Program Files\Common Files\Propalms\VDAssistant.dll  
Bin Folder in "..\Inetpub\wwwroot\console"  
..\Program Files\Common Files\Propalms\CuLogic.tlb  
..\Inetpub\wwwroot\Depot\PropalmsHyperPrint.msi  
..\Program Files\Propalms\CuSystem\CuLogic.dll

### **App Server:**

..\Program Files\Propalms\WTSServer\TSEApps.xml  
..\Program Files\Propalms\WTSServer\NotificationServiceComponent.dll  
..\Program Files\Propalms\WTSServer\NMTSEManager.dll  
..\Program Files\Common Files\Propalms\ResourceUsageProvider.dll  
..\WINDOWS\system32\NMTSEControl.exe

### **Load Balancer:**

..\Program Files\Propalms\LoadBalancer\LoadManager.dll

### **VD Server:**

..\Program Files\Common Files\Propalms\ResourceUsageProvider.dll

### **Every Server Having Propalms TSE Engine:**

..\Program Files\Propalms\Installation Manager\RoleAgents.dll